



**MILWAUKEE  
PUBLIC SCHOOLS**

## **Data Sharing throughout the County**

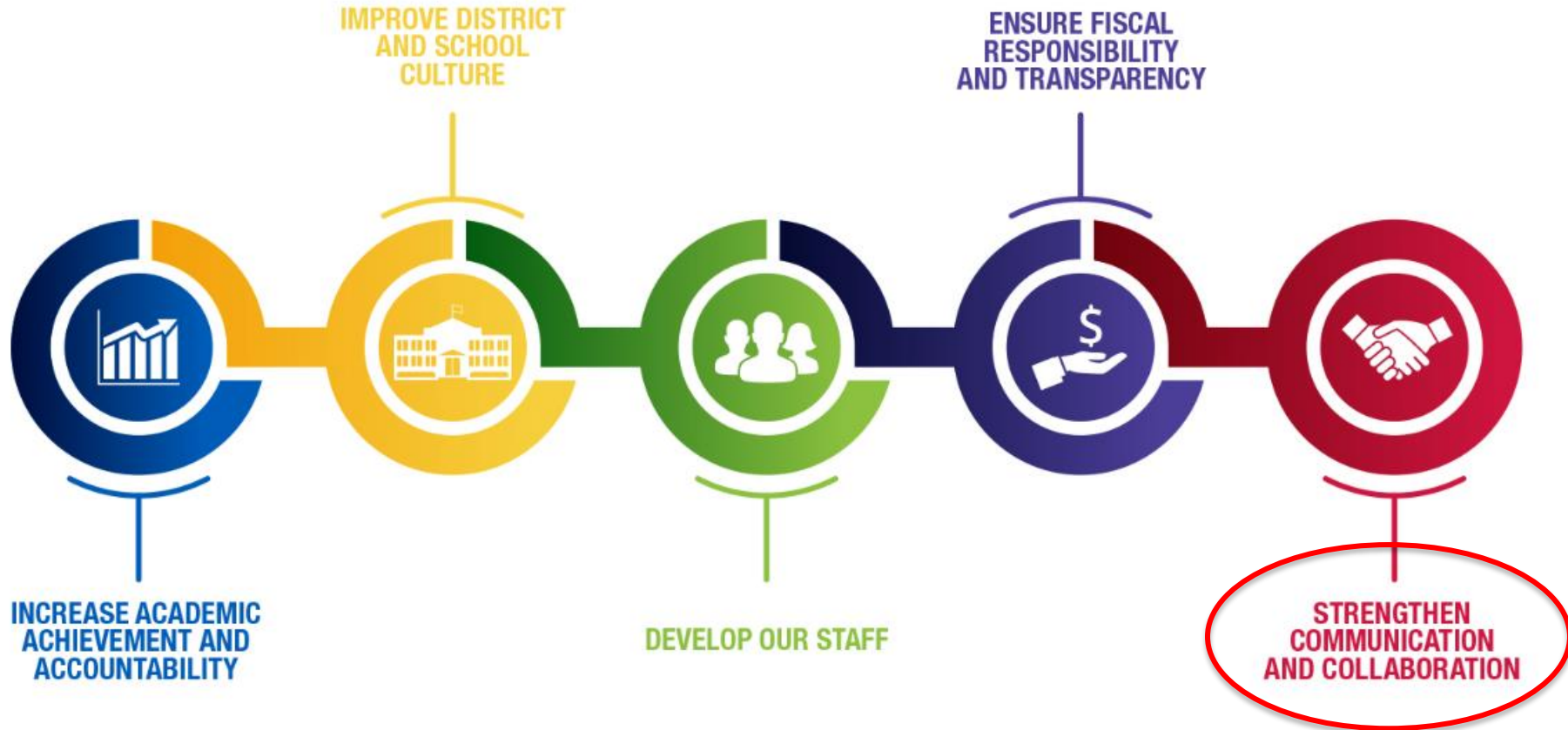
October 21, 2022

**Dr. Keith P. Posley**  
*Superintendent*

*Presenters:*

Melanie R. Stewart, Ph.D., Director, Research, Assessment, and Data  
Constance Kostelac, Ph.D., Assistant Professor, Institute for Health  
and Equity, Medical College of Wisconsin

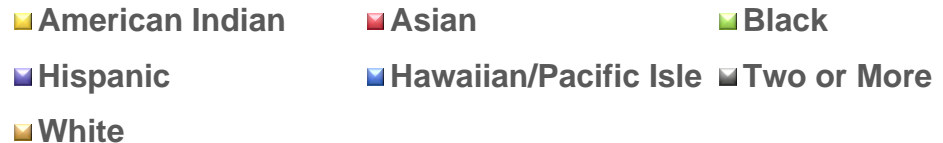
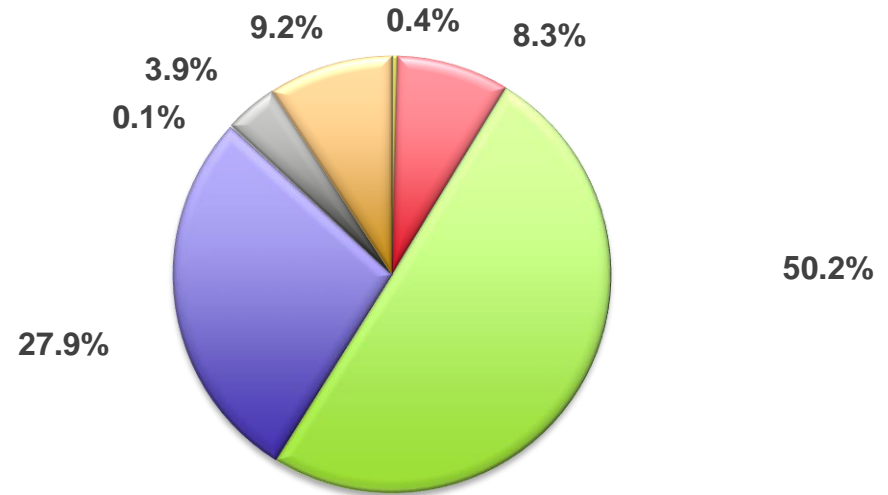
# Five Priorities for Success



# Milwaukee Public Schools

## Diversity is our strength!

- 68,435 students
- 156 schools
- 13.8% English language learners
- 19.6% special education
- 75.2% economically disadvantaged\*



# DataShare – The Beginning



Data Informed Collaboration  
To Improve The Health, Safety, Education  
And Prosperity In Our Neighborhoods



- Drive action
- Improve strategies
- Implement precision epidemiology
- Answer the big questions
- Change policy and procedures

Analysis + Intervention = CHANGE

# DataShare

---



- DataShare is an integrated data system intended to cross critical areas within public health and safety
- Supports research and analysis efforts for participating agencies, community partners, and researchers
- Provides a unique way to address questions that cross data sources
- Policy team and executive committee

# DataShare Data Sources

**Milwaukee Public  
Schools**

**Milwaukee County  
District Attorney's  
Office**

**Milwaukee Health  
Department**

**Milwaukee County  
Medical Examiner's  
Office**

**Office of  
Emergency  
Management**

**Milwaukee Police  
Department**

**Wisconsin Circuit  
Court Access  
(WCCA/CCAP)**

**Offense and Arrest  
Data – Milwaukee  
Law Enforcement  
(UCR)**

**Milwaukee County  
Pretrial**

**Reference data  
(census, map files)**



Data Informed Collaboration  
To Improve The Health, Safety, Education  
And Prosperity In Our Neighborhoods



# DataShare Structure



DataShare also includes some data sources at the aggregate level that cannot be linked to individual-level records.

# Milwaukee County Overdose Dashboard

- Milwaukee County has experienced a 67% increase in fatal overdoses from 2018–2021
- Dashboard provides information to stakeholders and community members about the overdose crisis
- Developed to inform decision making to reverse this trend and reduce fatal overdoses in the region
- Impacted health instruction to real-time data for staff

## Data sources:

- Milwaukee County Medical Examiner's Office – fatal overdose information
- Office of Emergency Management – nonfatal overdoses and naloxone distributions

## Data:

- Data is updated approximately monthly
- Includes geographic distribution, time trends, and demographics

<https://county.milwaukee.gov/EN/Vision/Strategy-Dashboard/Overdose-Data>

Data Source: Milwaukee County Medical Examiner's Office and Milwaukee County Office of Emergency Medicine through DataShare

## Suspected Nonfatal Overdoses

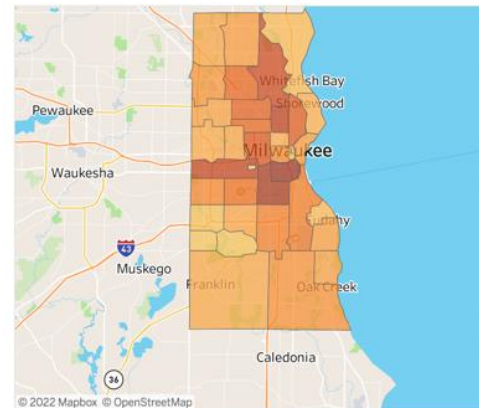
Most recent nonfatal overdose displayed: 5/31/2022. Last updated: 6/13/2022.

2022 Year-to-Date:  2021 Total:

Suspected Nonfatal Overdose Date Range

January 2018  May 2022

Nonfatal OD Map Current Total:



Counts of Suspected Nonfatal Overdoses

8  1,579

## Confirmed Fatal Overdoses

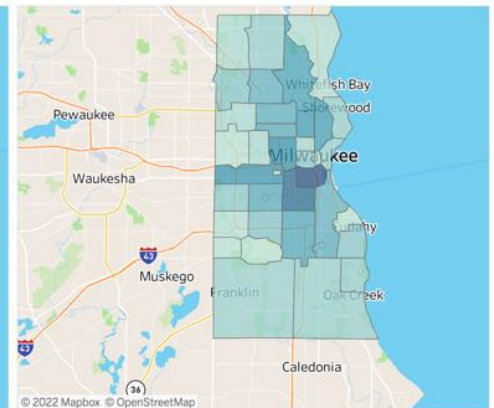
Most recent confirmed fatal overdose displayed: 5/18/2022. Last updated: 6/15/2022.

2022 Year-to-Date:  2021 Total:

Fatal Overdose Date Range

January 2015  June 2022

Fatal OD Map Current Total:



Counts of Fatal Overdoses

13  289





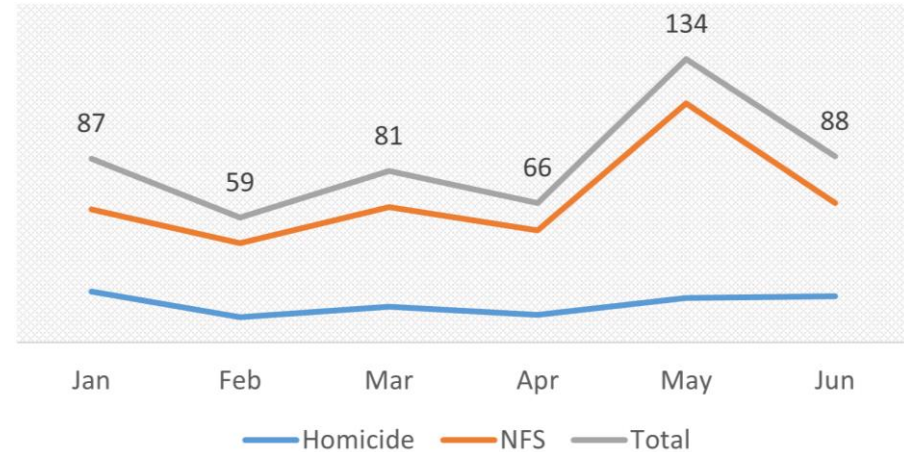
# Compelling Need

**Figure 1. Homicide and NFS Victim Frequency Year-to-Date, 2015-2022 (through June 30th)**



Area	Frequency	Percent
Focus Area	157	30%
Outside Focus Area	358	70%

**Figure 2. Homicide and NFS Victim Frequency by Month, 2022**



# Violence Response – Public Health and Safety Team



**Mission:** To coordinate a unified, multi-sector public health and public safety response to reduce the impact of firearm violence and homicides on individuals, families, and the community in collaboration with partners across Milwaukee County.

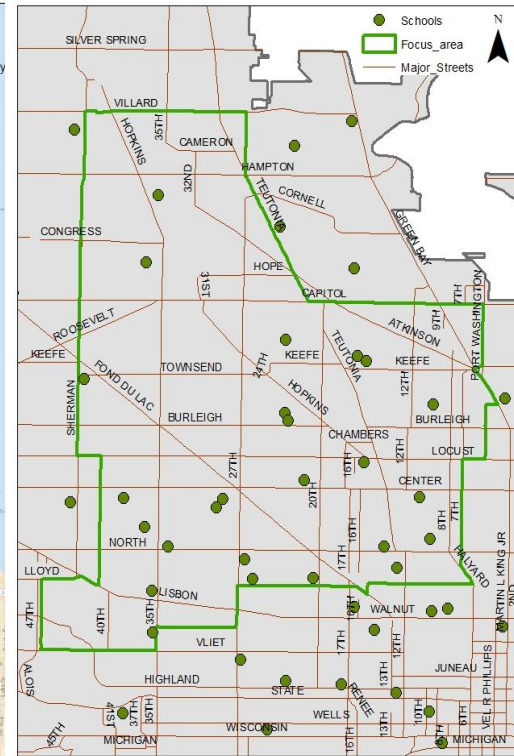
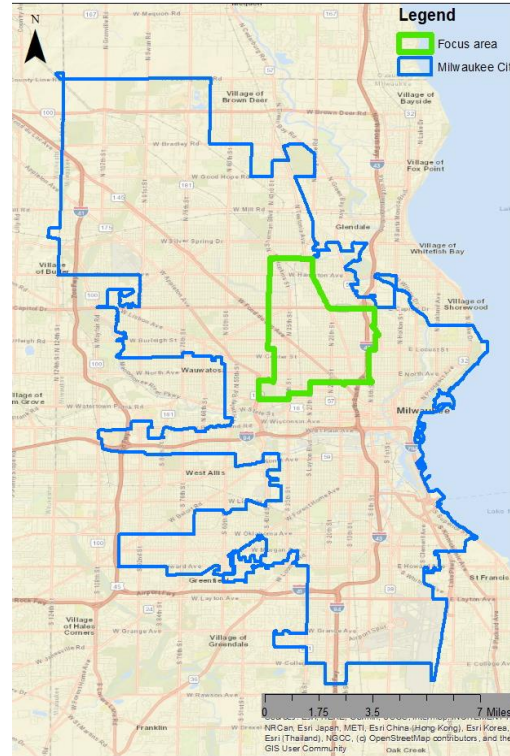
**Overall goals:** Improve communication and information sharing, identify resources and unmet needs, and coordinate an enhanced response to violence.

**Data sources:**

- Census tracts, schools, nonprofits, properties
- Location of incidents and basic descriptive details on victim and incident

**Data:**

- Homicide data that meet the Uniform Crime Reporting definition
- All nonfatal shootings, regardless of circumstances
- Counts are based on the number of victims and the date of the incident, which may differ from other reports



# REDIRECT (Research in Early Childhood Development to Improve Resiliency and Equity)

REDIRECT aims to improve the well-being of children in Wisconsin through quantitative data analysis and qualitative exploration of key drivers of health disparities related to early childhood development.

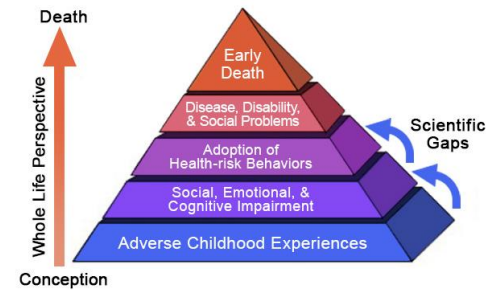
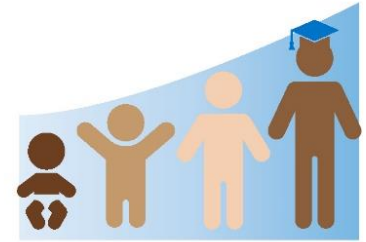
One arm of REDIRECT conducts quantitative analyses using DataShare data.

## Data sources:

- Eviction Lab (publicly available) – eviction rates by census tract
- Milwaukee Health Department – birth certificate/demographic data, blood lead level screenings
- Milwaukee Police Department – demographic characteristics, factors related to shooting incidents
- Milwaukee Public Schools – demographic data, standardized test scores

## Projects:

- Gestational Age and Academic Outcomes
- Association Between Lead Poisoning and Third Grade Academic Performance
- Neighborhood Eviction Rates and Academic Outcomes
- Characteristics of Pediatric Nonfatal Shootings
- Nonfatal Pediatric Firearm Injuries and Academic Outcomes (in progress)



# 2022 Goals: Documentation

---

## Data Source List

- Overview by data source
- Key info (frequency)
- New sources

## Data Source Overview

- What data contains
- Table-level summary
- Limitations

## Data Dictionaries

- Detailed list of variables
- Format, measurement, keys

## Data Model

- Visual representation of tables
- How the tables relate



**MILWAUKEE  
PUBLIC SCHOOLS**

**Thank  
You!**